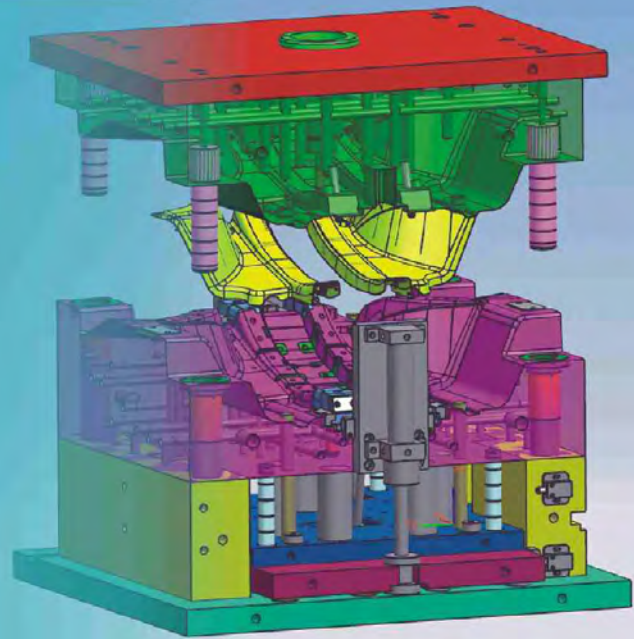


KISHORE INDUSTRIES



High quality reliable moulds. Delivered fast

The Company

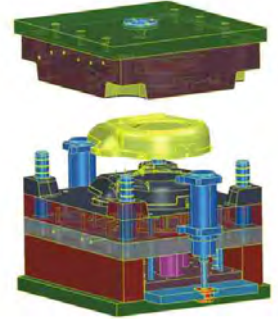
Established in 1986, Kishore Industries has earned a good name for making highly productive and reliable moulds. We design and manufacture plastic injection moulds for clamping tonnages upto 500. Our team of experienced technicians, machinists and die makers contributes more than 100 man-years of experience to ensure technically sound moulds for you. We have made quality moulds for components in polycarbonates, polyamides, ABS, polyacetal, PC ABS blends, glass and mineral filled Nylons, PBT etc.

Expertise in

- Mould Design
- Die Casting Tools Manufacture
- Reverse Engineering
- Mould Flow Analysis
- Mould Manufacture

Our Services

- Engineering assemblies/ as per customer's design
- Supply of Milled & Ground Steel Plates
- EDM Drilling for smaller & Deeper holes
- Precision Injection Moulding upto 400 Tons

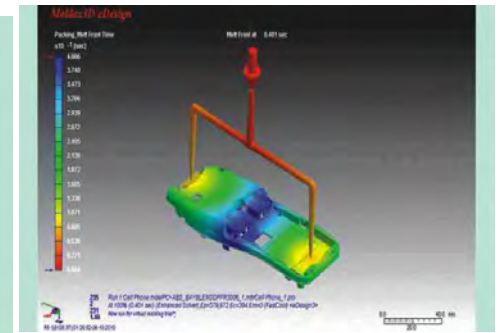
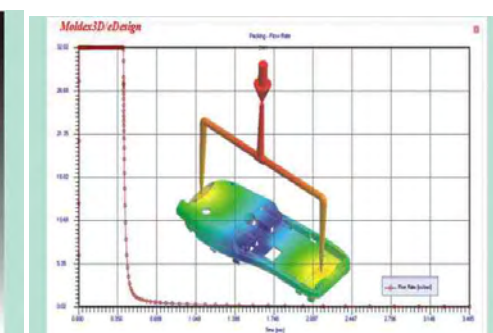
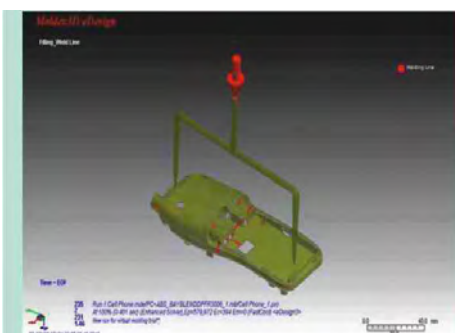


Design :

At Kishore, we understand that a good design is the foundation of an excellent mould. Our well experienced designers are assisted by the latest software. Available software include ProE Wildfire 5, Think3, Powershape & VISI.



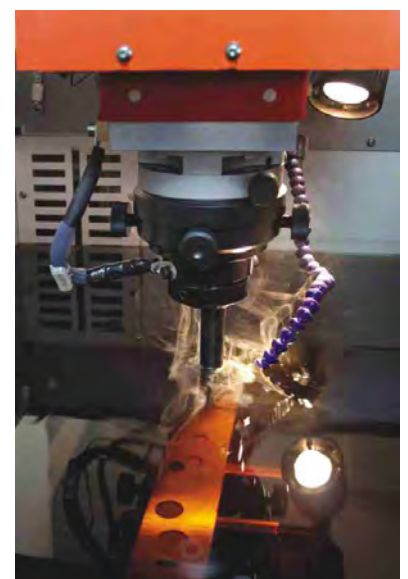
All designs are validated for flow, cooling, warpage, filling and packing using the latest Mouldflow software.





Plant Facilities :

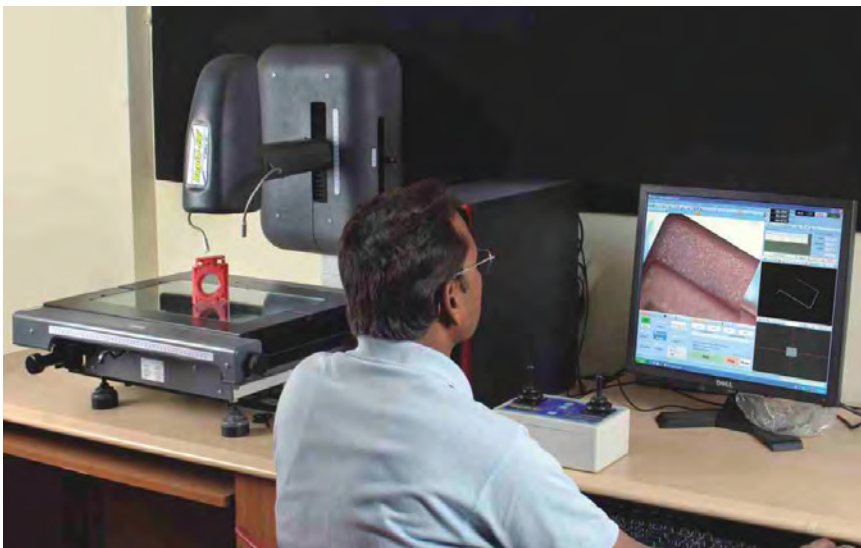
- DMC 63v DeckleMaho Vertical Machining Center. X=630, Y=500Z=500, Table Size – 800 X 600, Spindle Speed – 10,000 RPM.
- VF –3 HAAS Vertical Machine Centre X = 1016 , Y = 508 , Z = 635. : 2 nos.
- AgieCharmilles Roboform 23UP Die Sinking CNC EDM. Work size 630 x 400.
- PS-50-5535 Electronica make Spark Erosion Machine.
- ZNC Spark Erosion MMT Make with orbital Attachment, Tank Size 1000 x 750.
- Spark Erosion MMT Make with orbital Attachment Tank Size 1500 x 1200.
- Electronica make Wire cut EDM Machine
- Sparkonix Make EDM drilling machine.
- Bed Milling machine, HMT FN3 Heavy duty milling, HMT G17 Cylindrical Grinding, Proth surface grinder 1200 x 350, Jig boring 800 x 400, Enterprise 1330 Kirloskar Lathe and other conventional machines.



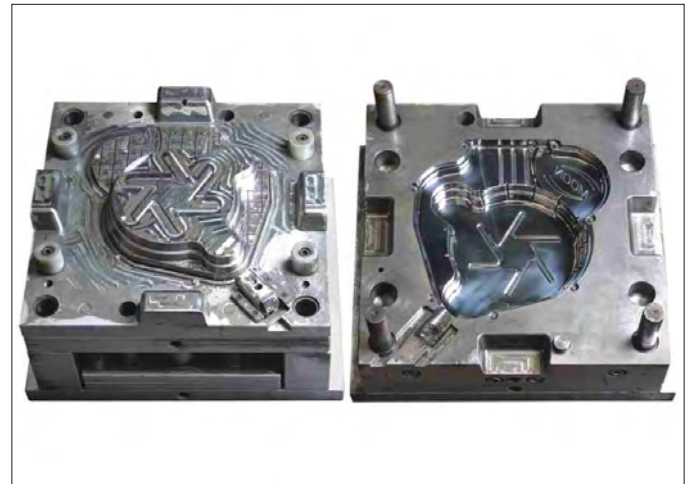
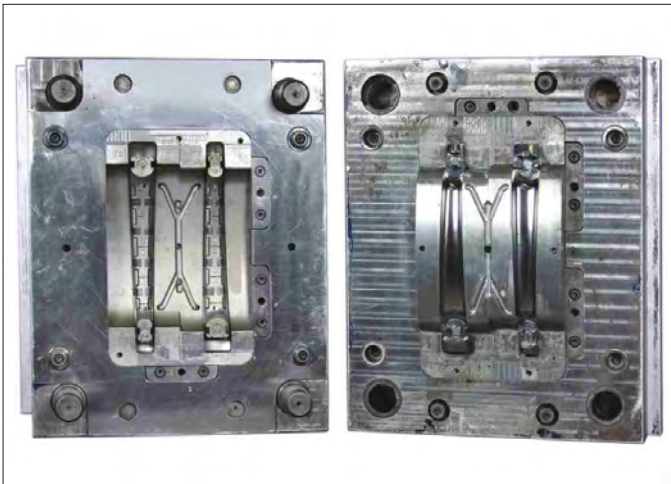
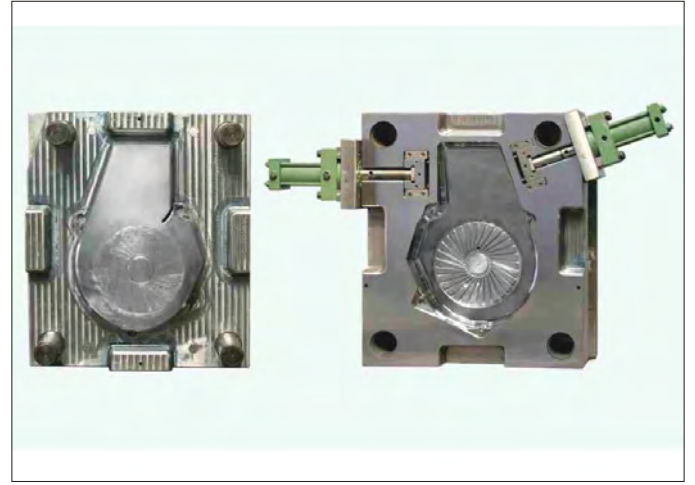
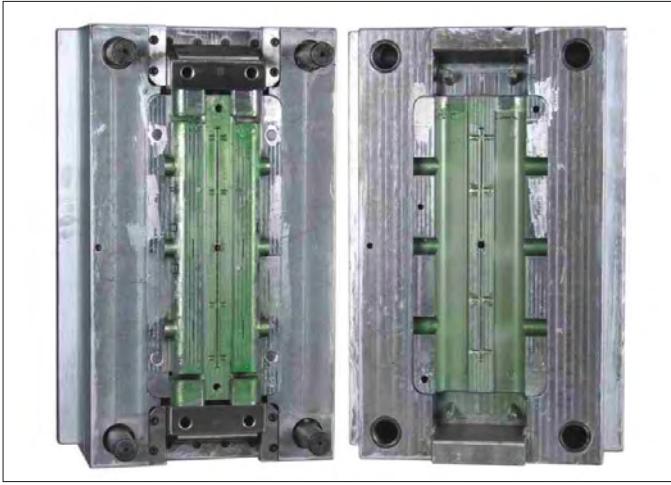


Quality Assurance

- Strict adherence to ISO 9001:2008 norms.
- Regularly calibrated and precise measuring instruments.
- Raw material tested for hardness, dimensions and chemical constituents.
- In-process and inspection for all parts of the moulds.
- Moulds tried out for efficient and trouble free operations.



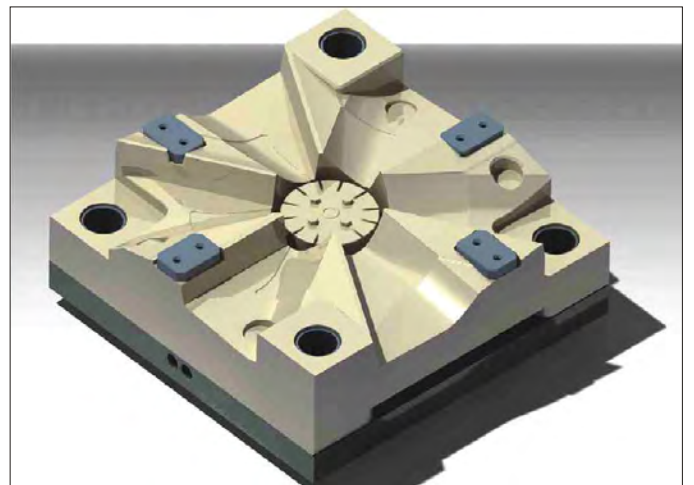
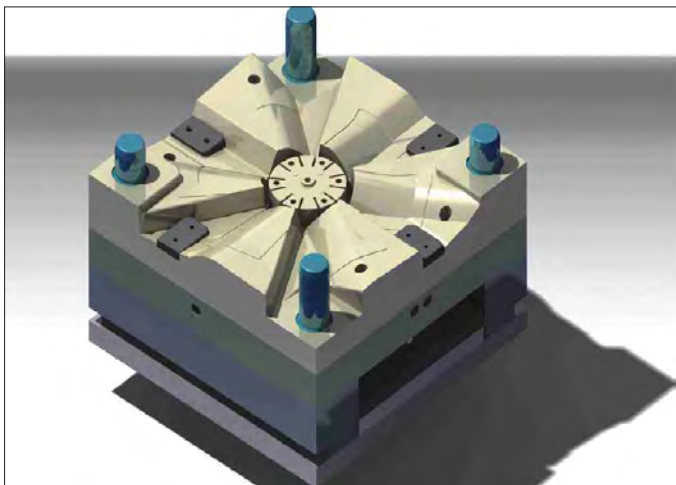
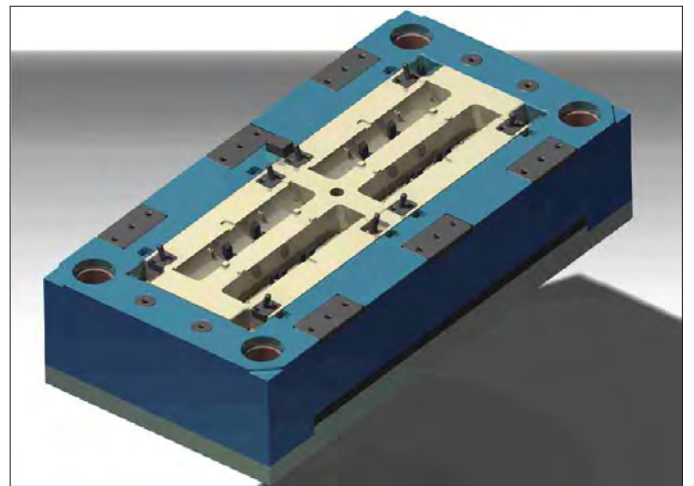
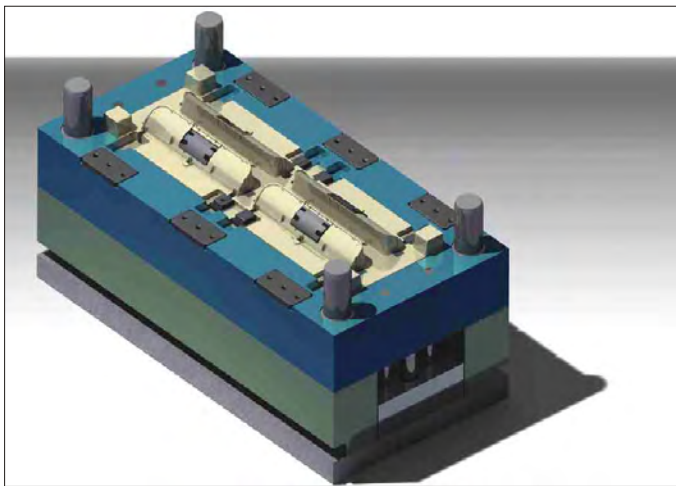
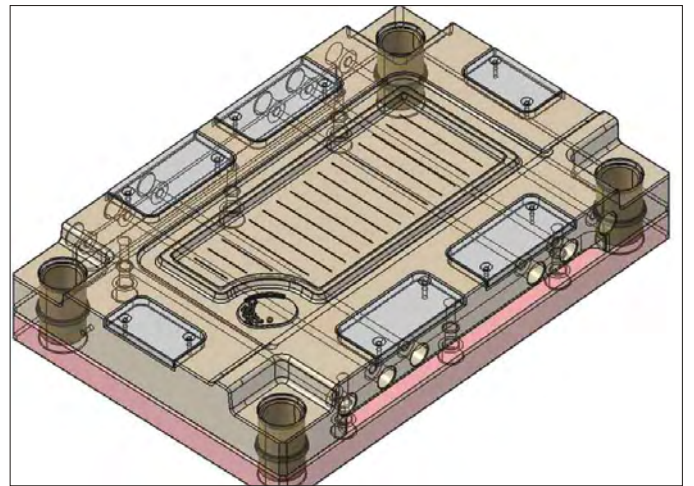
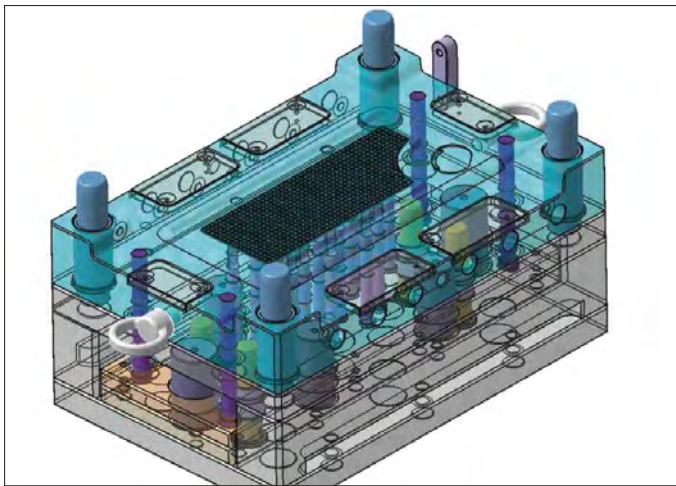
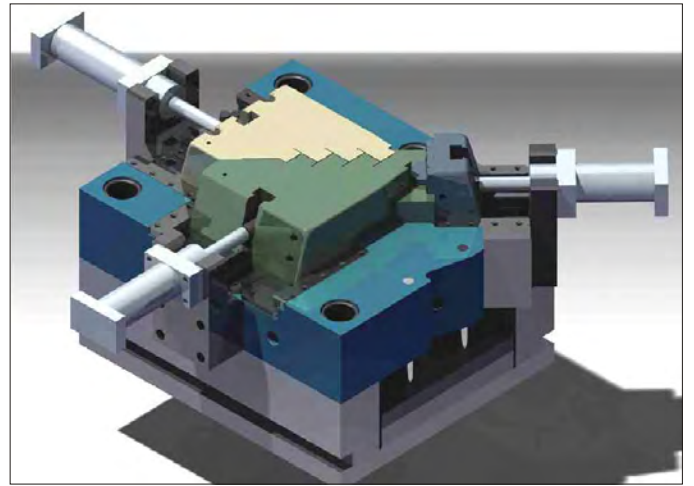
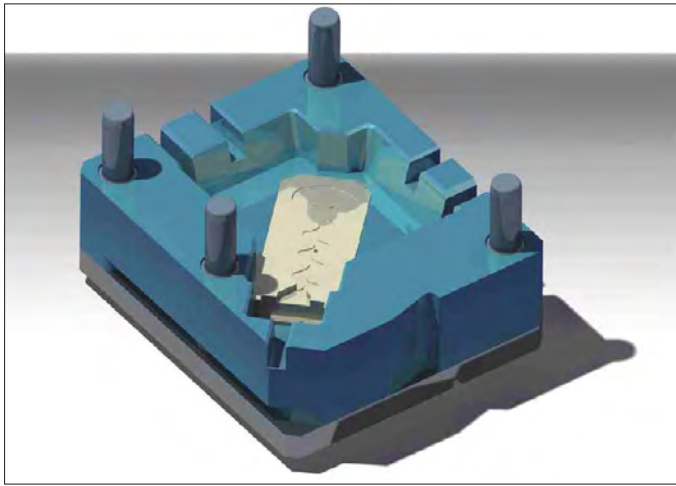
A special feature of our QA process is the non contacting, vision based, CNC Co-ordinate Measuring Machine. It is capable of magnifying tiny features up unto 65 times. This is very useful in inspecting profiled mould parts (core/cavities/electrode etc.) as well as trial samples so that they conform to customers requirements.



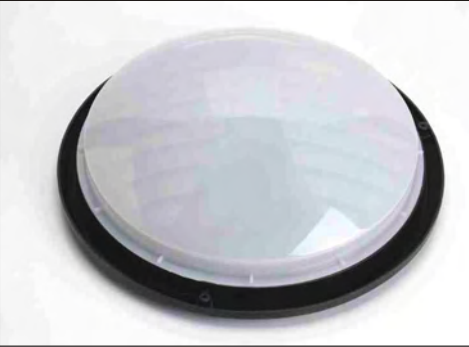
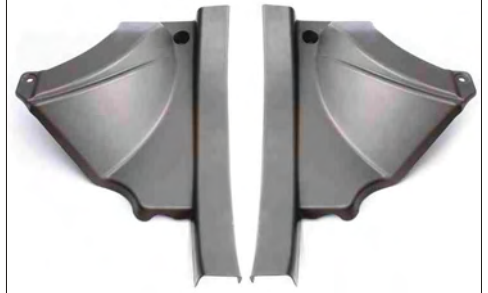
Mould Validation:

The moulds are finally validated at our moulding unit, for conformity with your requirements. Pilot lots are sent for approval.

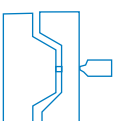
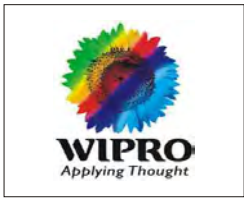




Products
from
our
moulds....



They have experienced our moulds :



KISHORE INDUSTRIES

C-32,33, MIDC Area, Waluj, Aurangabad - 431 136 (MS) INDIA

Ph No. : +91 240 6610515, 6610524

Fax : +91 240 6610517

Mobile : +91 9890019201

Email : jkabra@kabragroup.in

web : www.kabragroup.in ◀