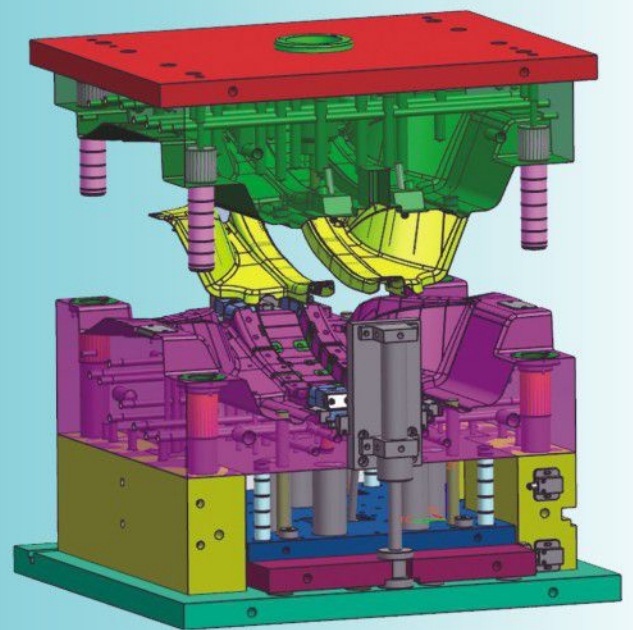


KISHORE INDUSTRIES PVT. LTD.

Plastic
Injection
Moulds



Long Lasting Moulds Delivered Fast



► web : www.kabragroup.in

The Company

Established in 1986, Kishore Industries Pvt. Ltd. has earned a good name for making highly productive and reliable moulds. We design and manufacture plastic injection moulds for clamping tonnages upto 500. Our team of experienced technicians, machinists and die makers contributes more than 100 man-years of experience to ensure technically sound moulds for you. We have made quality moulds for components in polycarbonates, polyamides, ABS, polyacetal, PC ABS blends, glass and mineral filled Nylons, PBT etc.

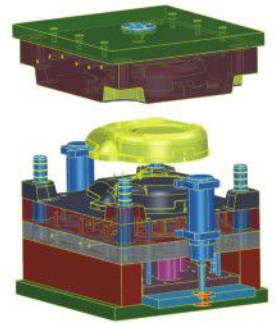
Our customers know us for the fast and on-time delivery of moulds. We can produce a mould with average complexity, within 25 days

Expertise in

- ▶ Mould Design
- ▶ Mould Manufacture
- ▶ Mould Flow Analysis

Other Services

- ▶ Engineering assemblies/ as per customer's design
- ▶ Precision Injection Moulding upto 550 Tons



Design :

At Kishore, we understand that a good design is the foundation of an excellent mould. Our well experienced designers are assisted by the latest software.

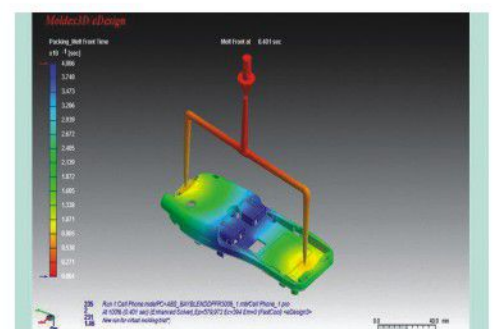
Available software are :-

- ▶ PTC Creo 3
- ▶ CAM - Work NC and DelCam



Design Validation :

All designs are validated for flow, cooling, warpage, filling and packing using the latest software, Moldex 3D





Plant Facilities :

- Makino F 5 X=350; Y=450; Z=350, Table Size - 1000 X 500
- DMC 63V Deckel Maho Vertical Machining Center. X=630; Y=500; Z=500, Table Size – 800 X 600
- VF - 3 HAAS Vertical Machine Center X = 1016; Y = 508; Z = 635 - 2 nos.
- VF - 6 HAAS Vertical Machine Center X = 1618; Y = 850; Z = 635 - 1 nos.
- +GF+ AgieCharmilles Roboform 23UP Die Sinking CNC EDM. Work size 630 x 400.
- +GF+ AgieCharmilles CNC Wire EDM Machine Cut 30P.
- JOEMARS EDM – JM650 +AZ75DR
- EDM drilling machine: 0.3mm to 10mm holes, upto 300 mm depth.
- ZNC Spark Erosion with Orbital Attachment, Tank Size 1000 x750.
- Spark Erosion with Orbital Attachment Tank Size 1500 x 1200.
- EDM Wire Cut Machine (Electronica)
- Spark Erosion Machine.
- Bed Milling Machine size - 2000 X 1000
- Jig Boring Machine size - 1500 X 1000
- Bed Milling Machine, HMT FN3 Heavy duty milling, HMT G17 Cylindrical Grinding, Proth surface grinder 1200 x 350, Jig boring 800 x 400, Perfect brand Surface Grinding Machine 700 X 1500 , Lathe and other conventional machines.





Quality Assurance

- We believe in manufacturing First Time Right
- Strict adherence to ISO 9001:2008 norms.
- Precise Measuring Instruments.
- Raw material tested for hardness, dimensions and chemical constituents.
- In-process and final inspection for all parts of the moulds.
- Moulds tried out for efficient and trouble free operations.

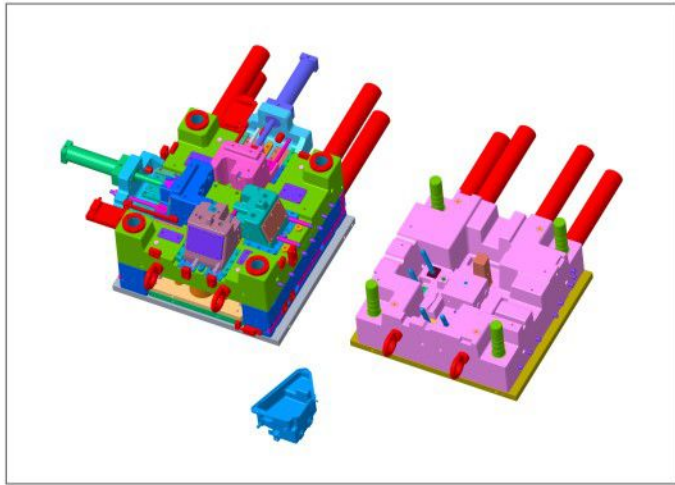
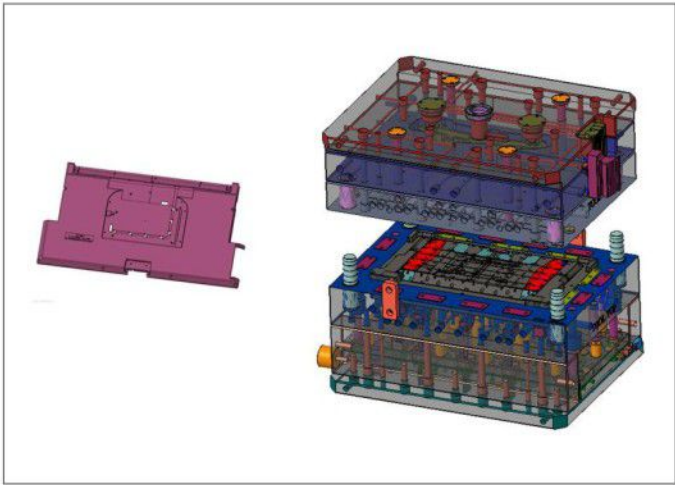
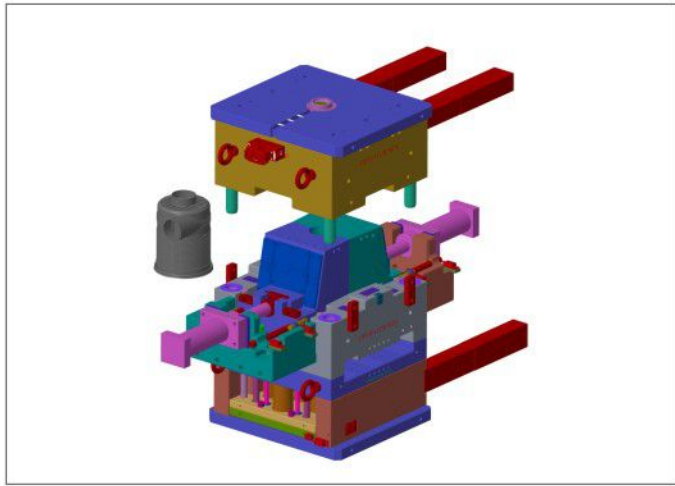
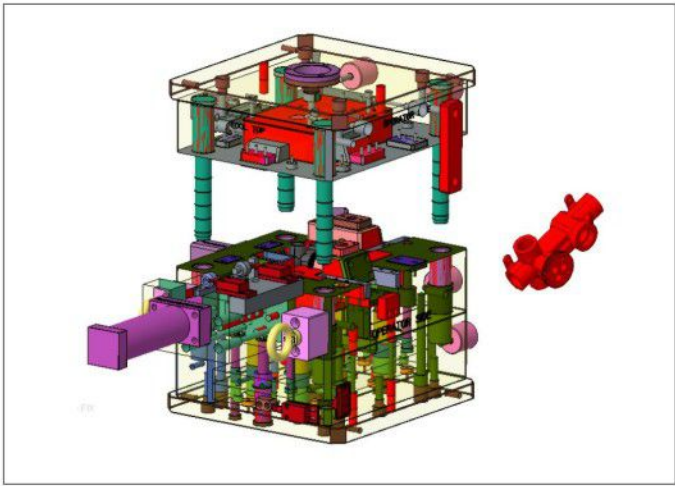
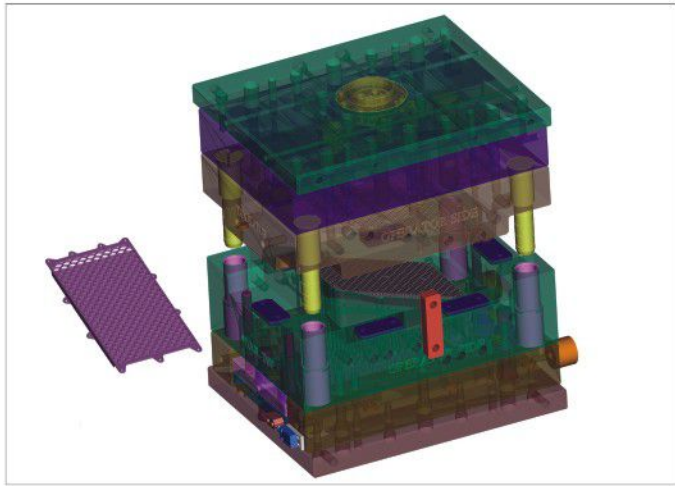
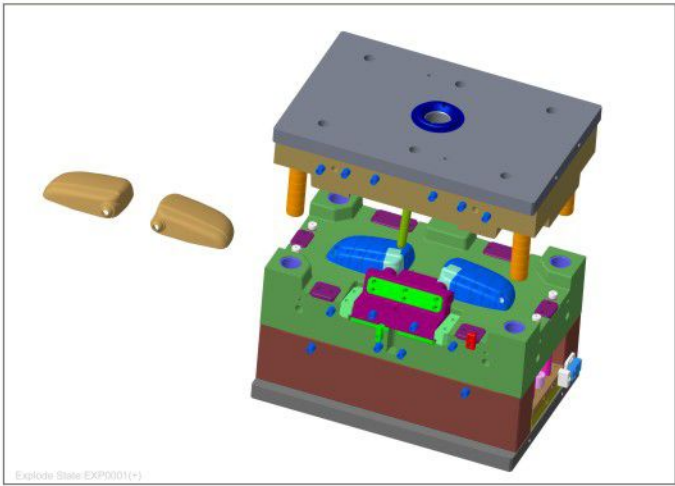
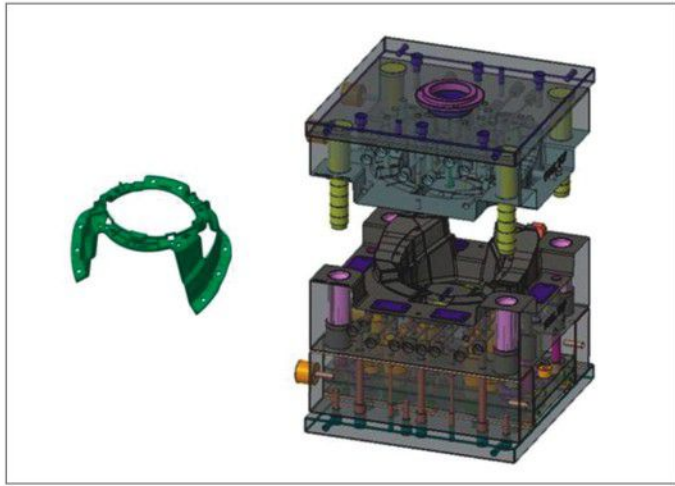
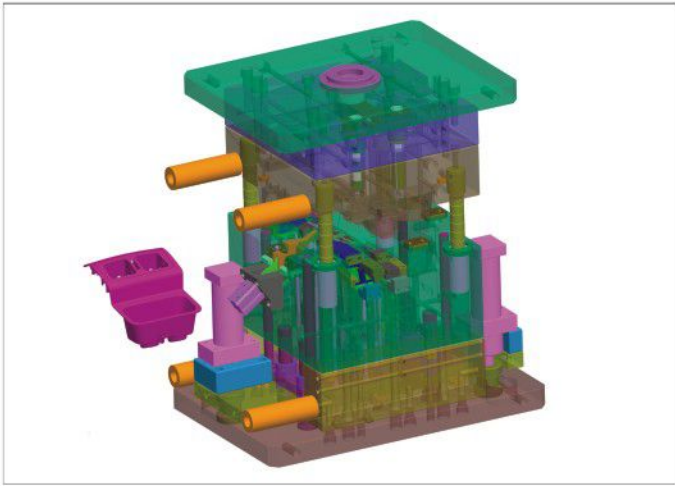


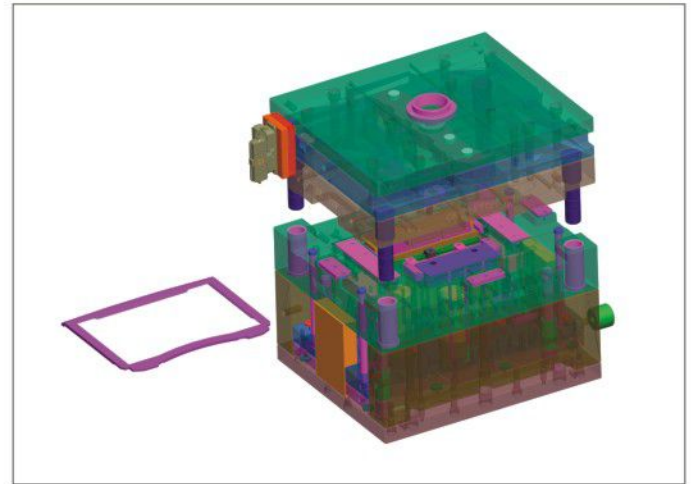
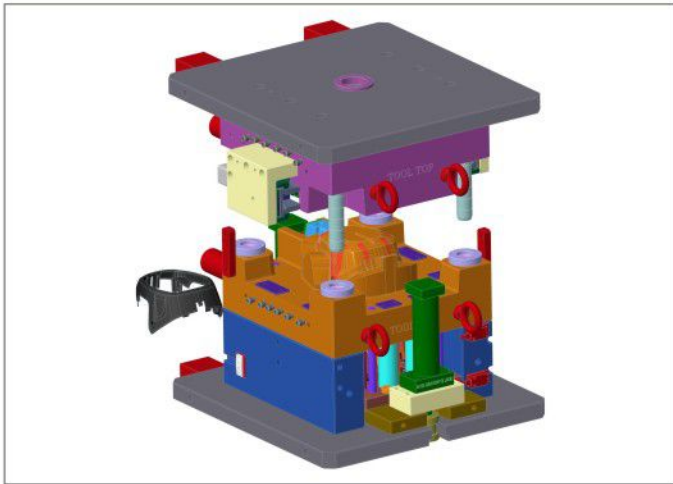
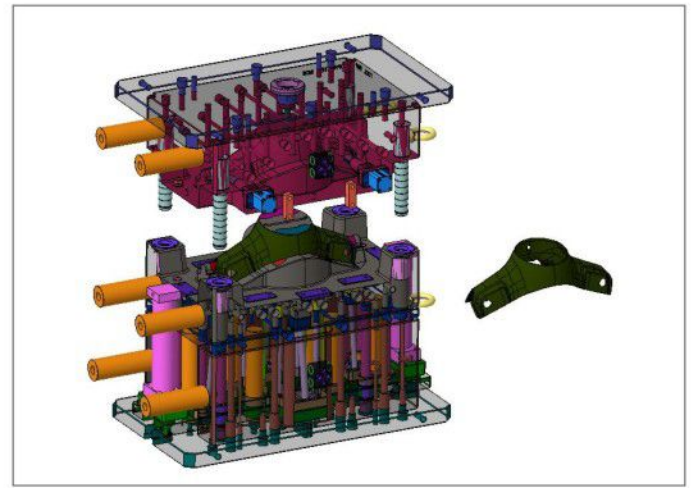
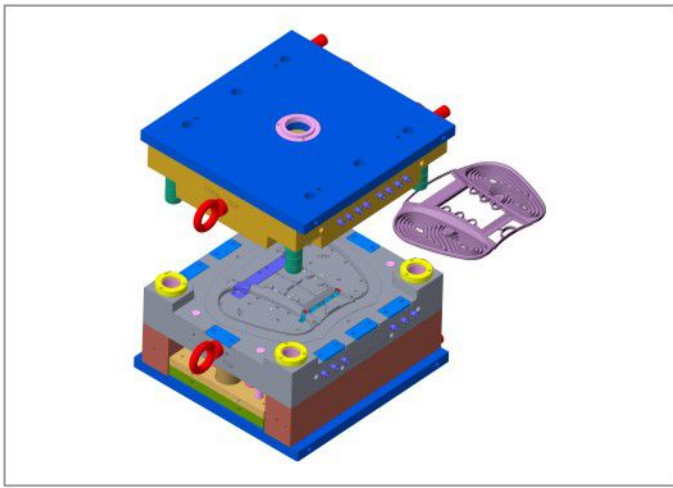
Special feature of our QA process :-

With Faro Arm CMM Machine we inspect all the mould parts at each and every manufacturing stage by comparing with Design CAD data, with an Accuracy of 0.04 mm. Which reduces unnecessary rework and manufacturing lead time, enhancing Quality of mould.

Profile Projector is the Non Contacting, vision based, CNC Co-ordinate Measuring Machine. For inspecting mould parts and samples within Accuracy of 5 Microns.





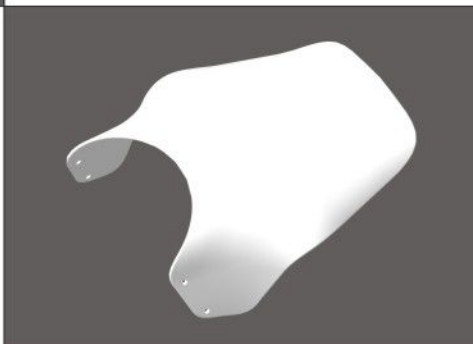
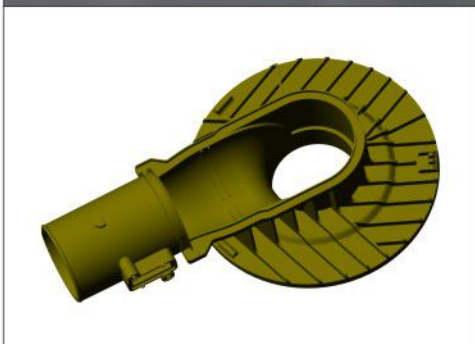
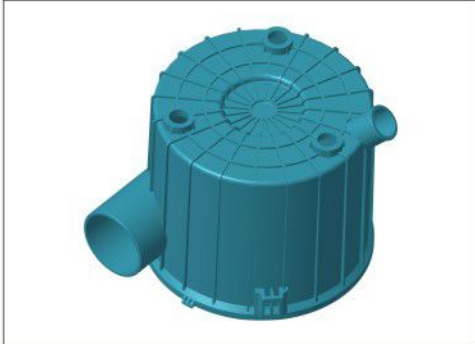


Mould Validation:

All moulds are validated at our sister concern M/s. Harhal Plastics Engg Pvt. Ltd. which is TS certified unit, for conformity with your requirements. Pilot lots are sent if required.



Products
from
our
moulds....



We have served in the following sectors :

- › Gas Appliances
- › Electrical
- › Electronics
- › Lighting
- › Furniture
- › Luggage
- › Irrigation
- › Home Appliances
- › Sanitary
- › Automotive
 - › Interior
 - › Engine Parts
 - › Lighting Parts



KISHORE INDUSTRIES PVT. LTD.

C-32,33, MIDC Area, Waluj, Aurangabad - 431 136 (MS) INDIA

Ph No. : +91 240 6610515, 6610524

Fax : +91 240 6610517

Mobile : +91 9766607870

Email : rfq@kabragroup.in

web : www.kabragroup.in ◀